

## Instruction to install 40813 Mice Cage

Contents:

You need:

- 12x small clips (Part A)
- 2x Mickey Mouse Clips (Part B)
- 3x mesh sides with doors (Part C)
- 3x mesh sides without doors (Part D)
- 1x bottom tray (Part E)
- 2x plastic platforms (Part F)
- 1x top cover (Part G)
- 2x large excise wheels (Part H)
- 1x small excise wheel (Part I)
- 1x running ball (Part J)
- 1x water bottle (Part K)
- 9 section of play tubes (Part L)
- 3x feeder cups (Part M)
- 3x plastic caps (Part N)
- 1x plastic strip (Part O)
- 3x plastic doors (Part P)

Step 1, use white clips (part A) connect the mesh sides.

There are 3 mesh sides with door entry,(part C) and 3 without door(part D), connect each mesh side with door and mesh side without door together.



Step 2, Install the mesh side with platforms (part F), please ensure:

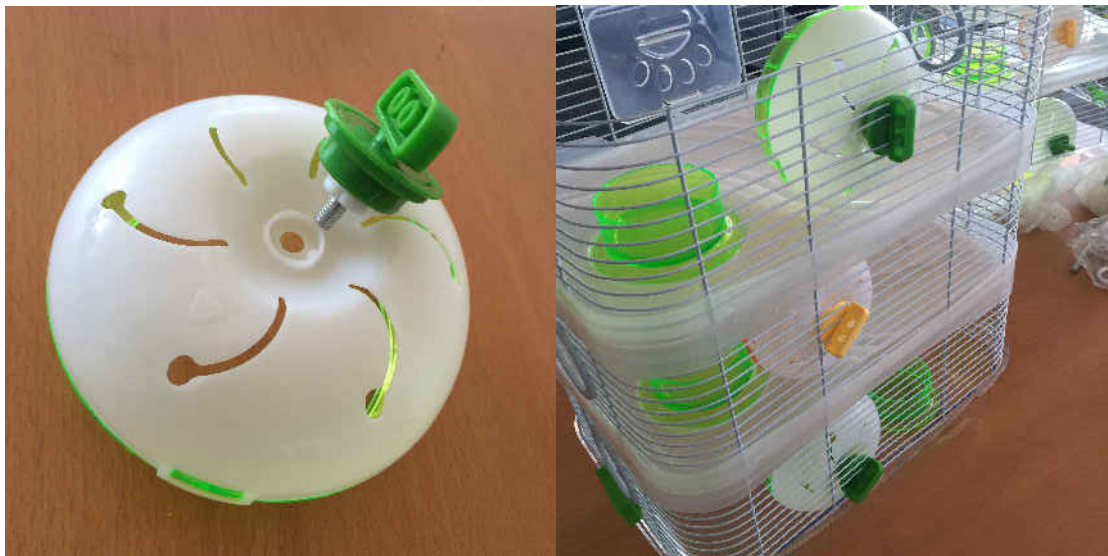
- The mesh door side should be at same side with the platform with a cut-out.
- On the mesh side, above the door, it should be 3 bars, and 2 bars at the bottom.
- The mesh sides need be pushed into the clips built on platforms.
- The bottom tray(part E) is connected to the mesh sides using micky mouse shape clips(part B)



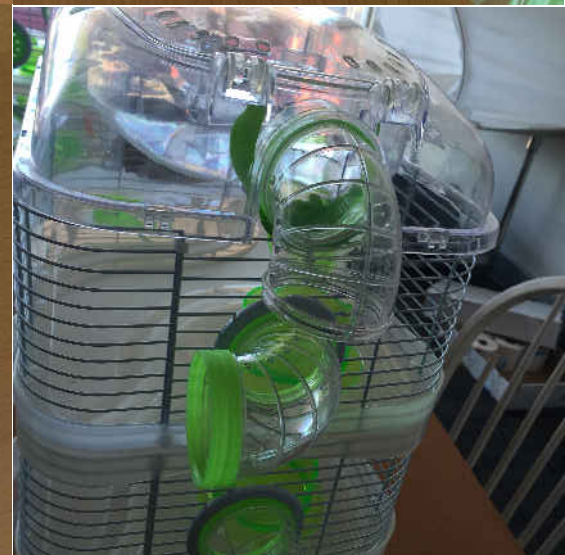
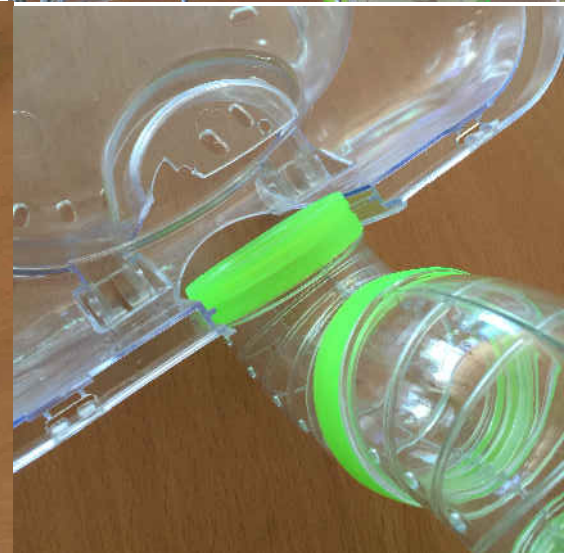
Step 3, Clip the doors (part P) to the second bar above the door entry.



Step 4. Install the exercise wheels into the cage, 3 wheels provided, 2 large ones (part H) for top and bottom rooms, and smaller one (part I) for middle room. When screwing the nuts, please see the photo 1, please ensure the gap on the nuts onto the slot on the wheel.



Step 5, Install the play tubes. To install the play tubes(part L) for the top part, please turn over the top cover (part G), and sliding in the tube, then covered with small plastic strip(part O), then connect the rest tubes.



Step 6, Install running ball (part J), and all rest parts.

